

MVS User Guide

CA TPX - (Terminal Productivity Executive)

Document Version #	Modified Date	Modified By	Section, Page(s) and Text Revised
0.1	Dec 2013	Leonard	Created
2.2	Jan 2014	Cifani/Leonard	Updates throughout document to add additional details.

Table of Contents

Overview	3
Product Description	3
Version	3
Platforms.....	3
Access.....	3
Usage Notes	3
Logon Option.....	4
Help Menu.....	12
Logoff	13
Change Management.....	13
Support.....	13
Documentation	13
Technical Information Bulletins (TIBs)	14
Tips and Hints Quick Reference	14

Overview

Product Description

CA TPX Session Management provides concurrent access to multiple mainframe applications from a single menu and allows switching from application to application. TPX offers a consistent, secure point with an extra layer of authentication. Users will logon to TPX with a valid RACF account and then select the desired application.

TPX (Terminal Productivity Executive) has many advantages:

- An industry standard
- Able to update and configure dynamically (no outages required)
- Improved security (e.g. can eliminate unnecessary access)
- Improved functionality (e.g. multi-session support)

Version

V5.3 All LPARS (D1DD, A1AA, I1II)

Platforms

z/OS.

Access

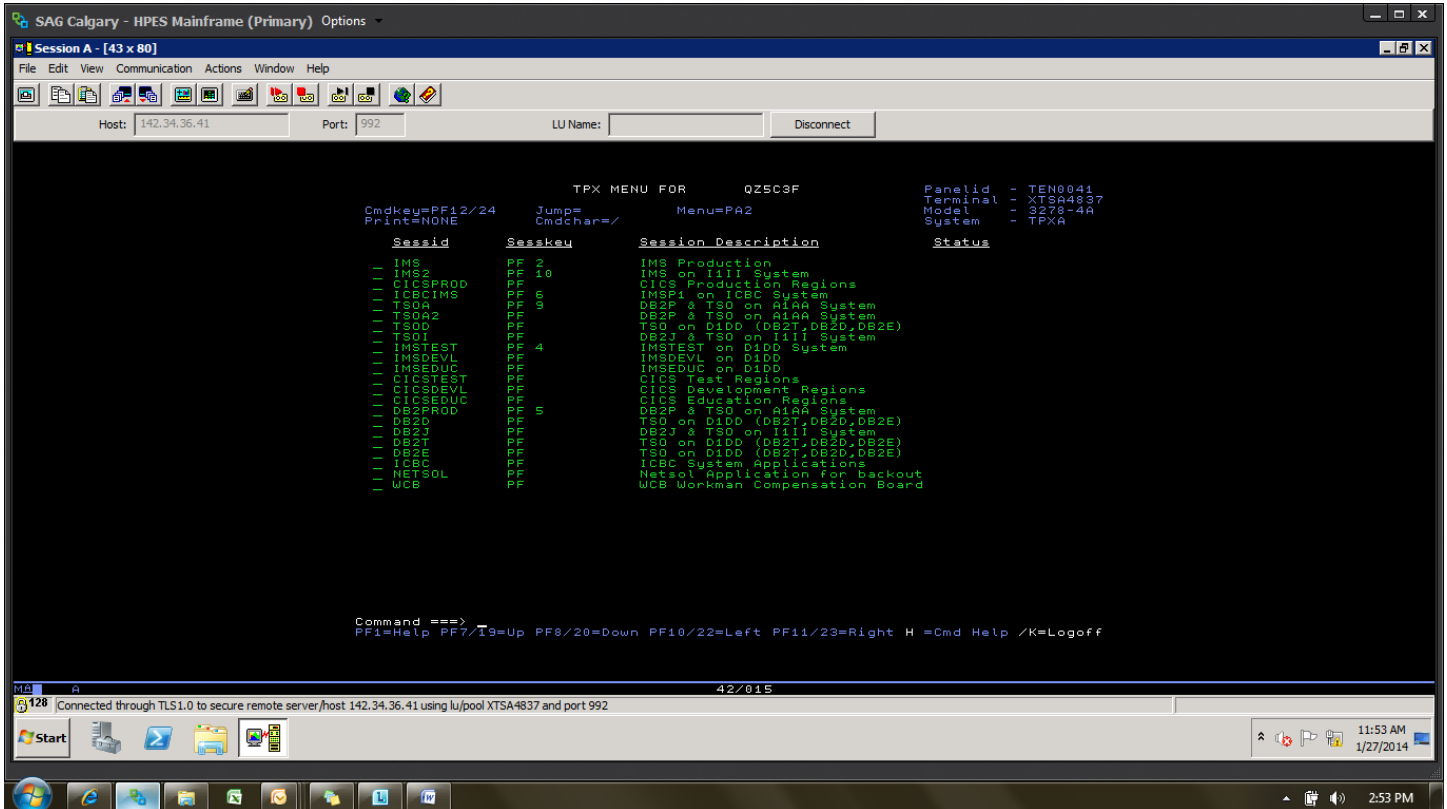
CA TPX can be accessed by entering /TPXD for D1DD, /TPXA for A1AA and /TPXI for I1II.

Usage Notes

See sample screen shots below:

- You will now see the TPX Menu selection

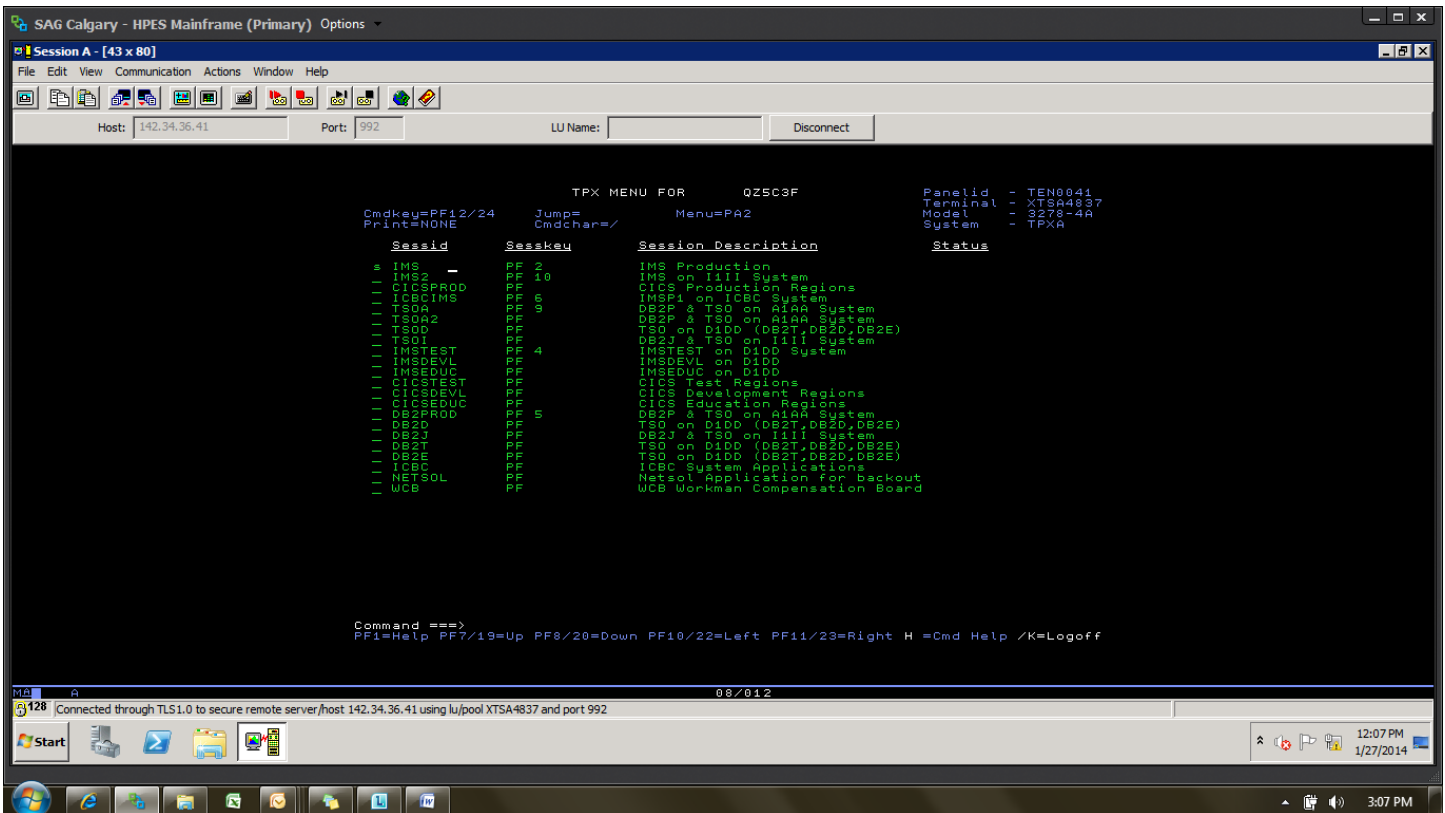
Example of Production TPX Selection Menu



Selecting IMS Menu

- To select IMS you will enter **S** next to the IMS Region you wish to select, or hit the PFK if any assigned to the application, for this example, a SessKey PF 2 will select IMS region, or thirdly simply type the application name on the command line as below.

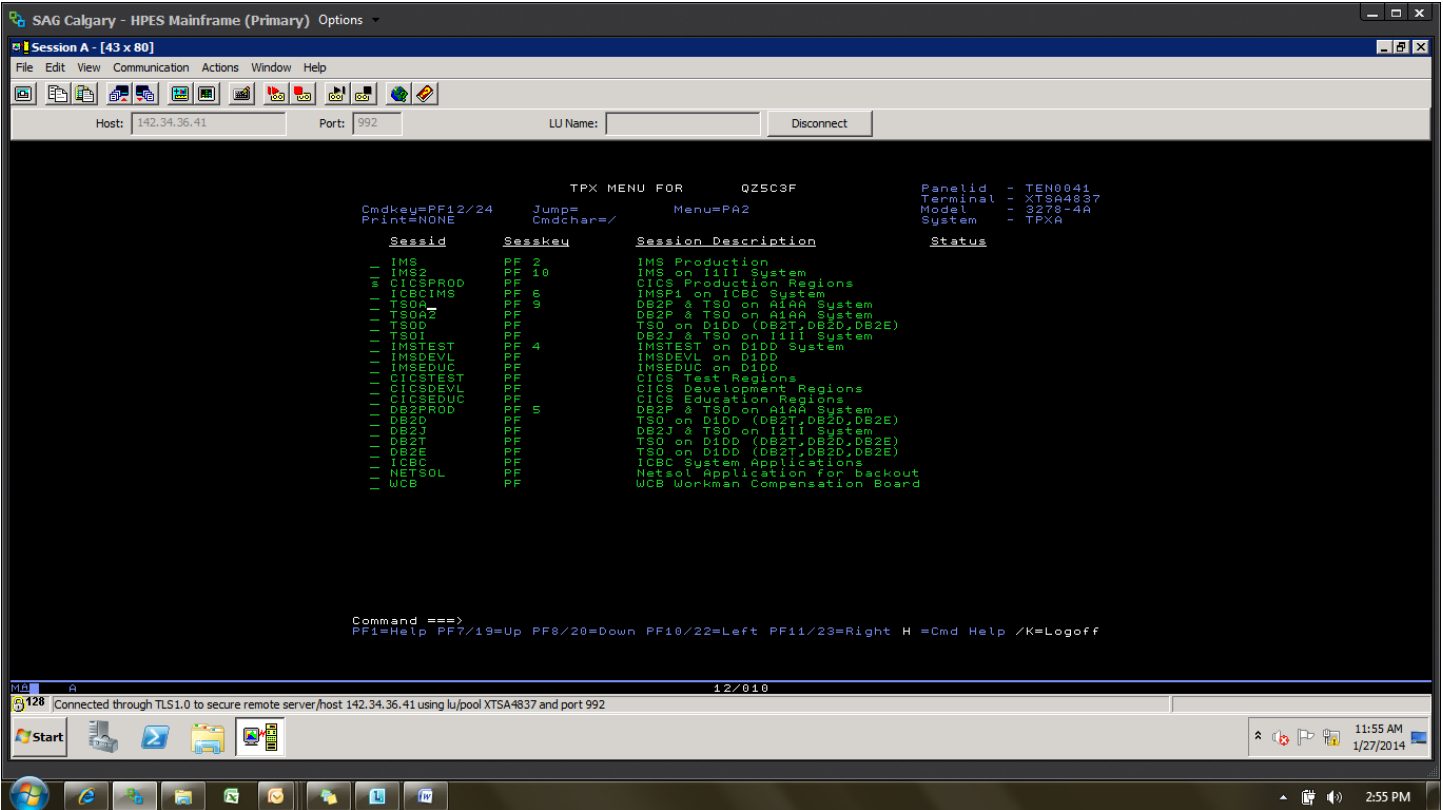
Command ==> **ims**



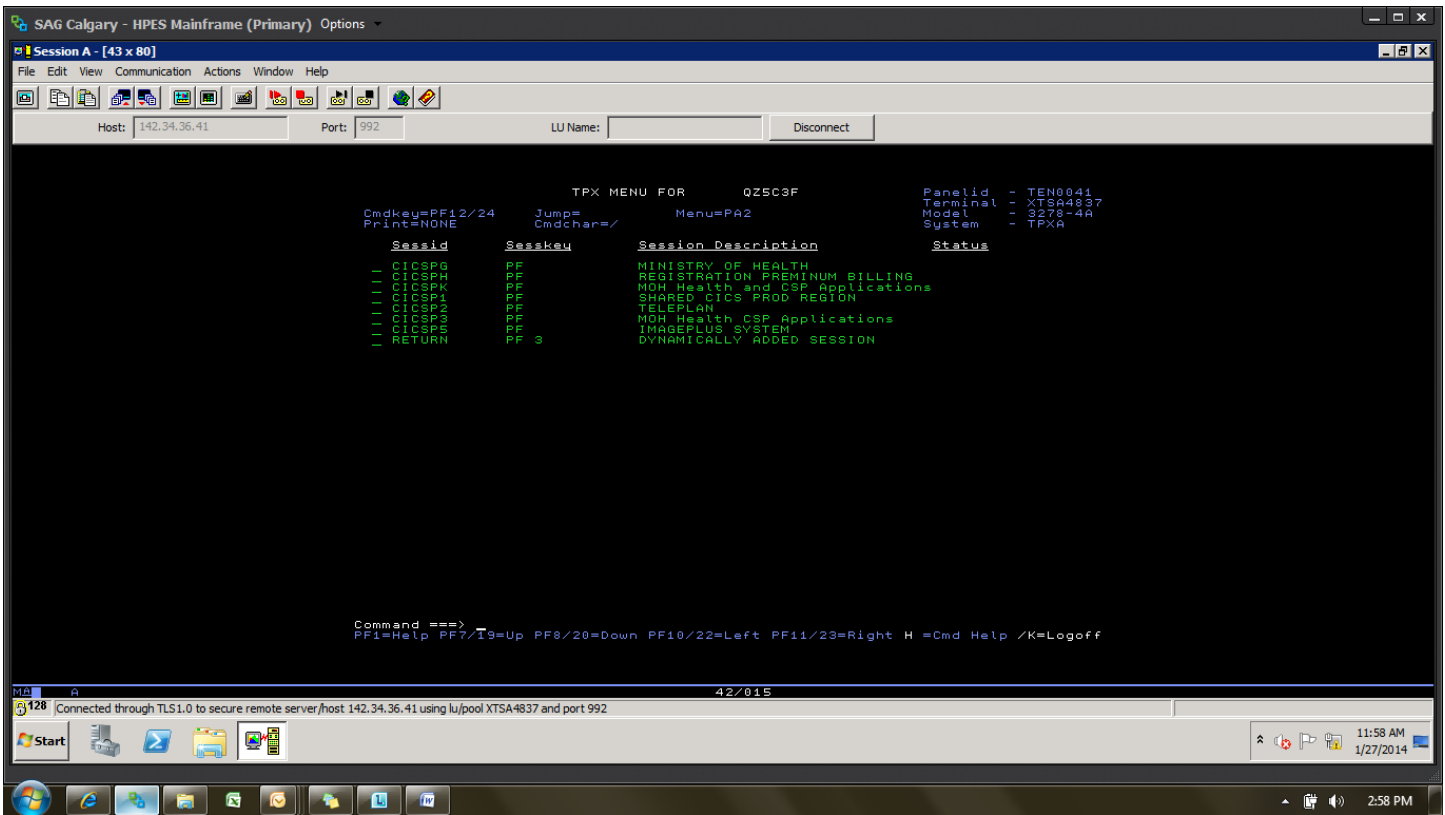
Note: The steps outlined above can be applied when selecting other IMS Regions. To select another application hit the **ESC** key to return you at any time back to the TPX Applications Selection Menu

Selecting CICSPROD Menu

- To select CICS you will enter **s** next to the CICS Region you wish to select



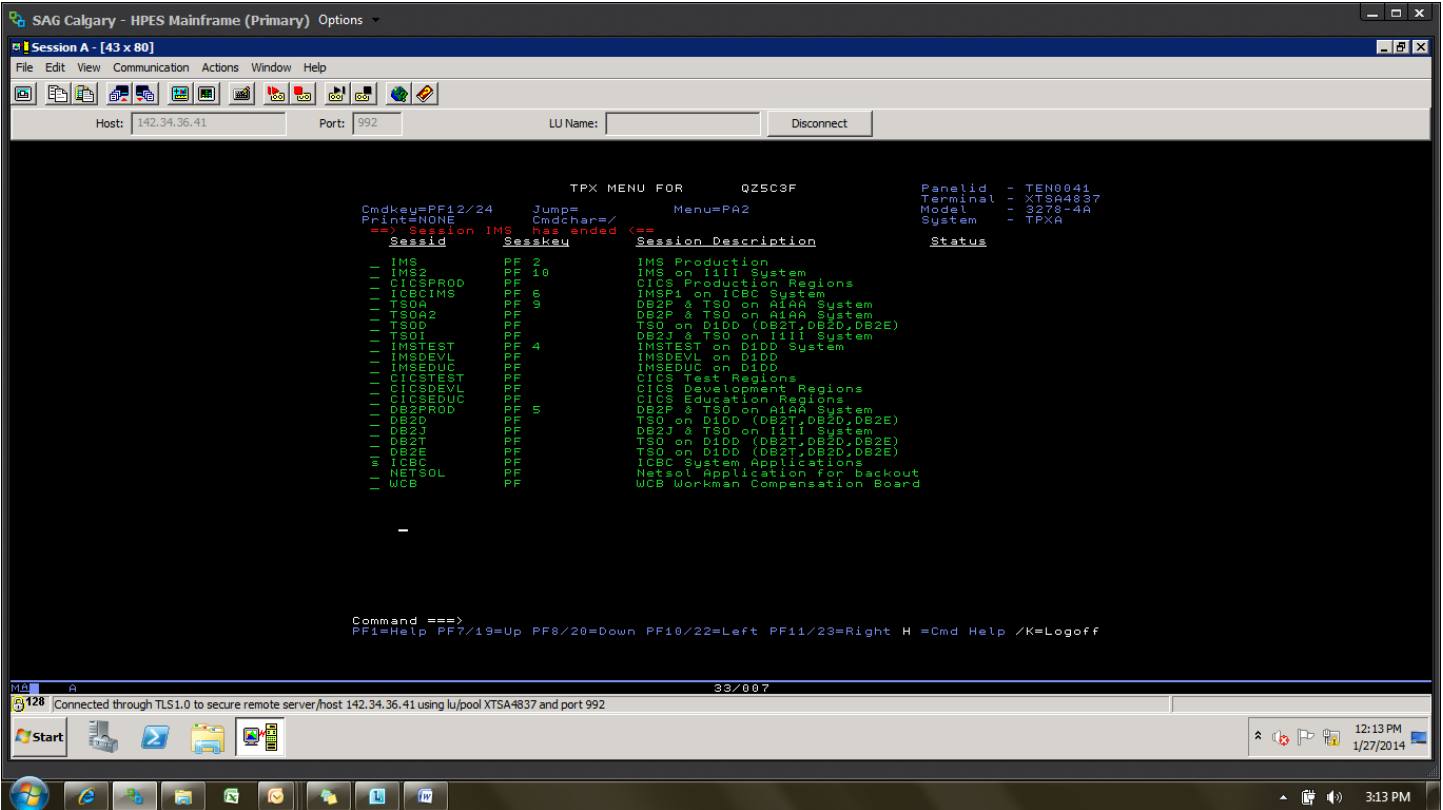
Example of CICSProd TPX Menu



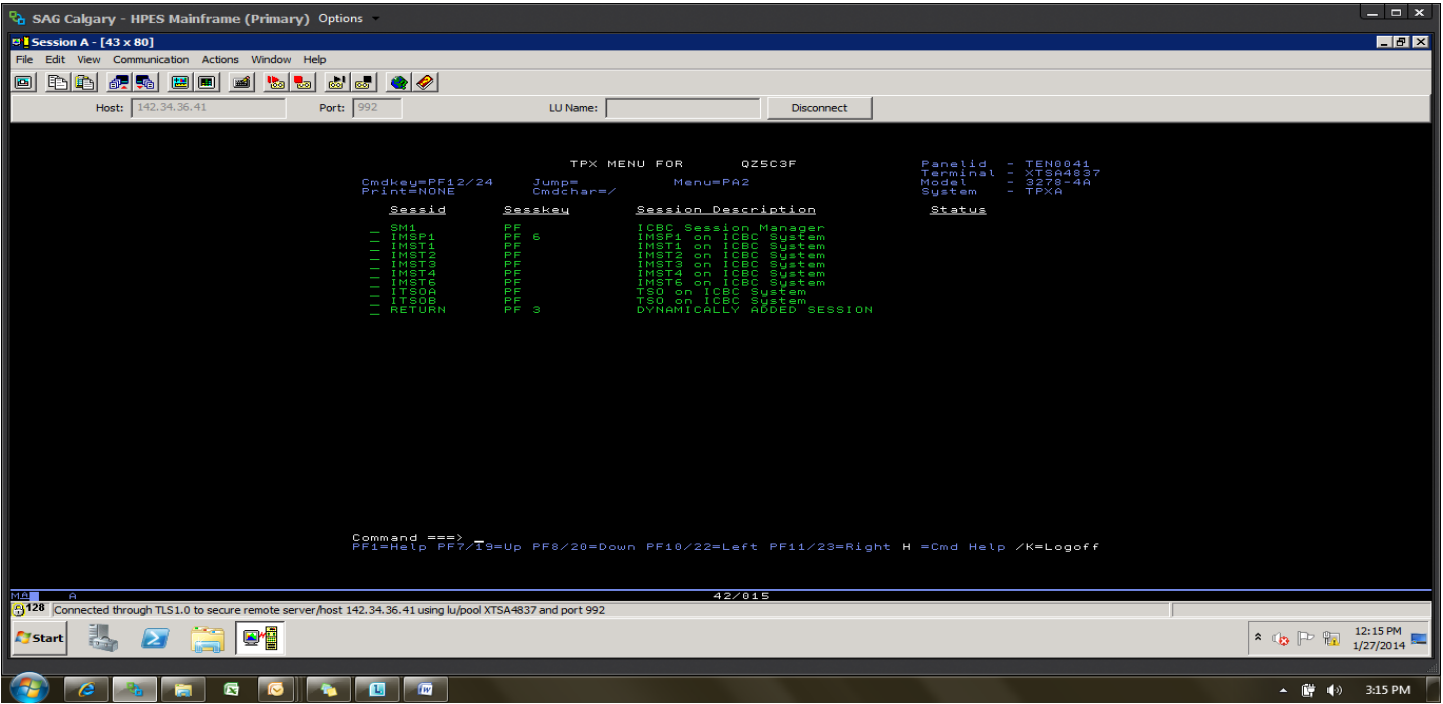
Note: The steps outlined above can be applied when selecting other CICS Regions.

Selecting ICBC menu

- To select ICBC you will enter **s** next to the ICBC selection

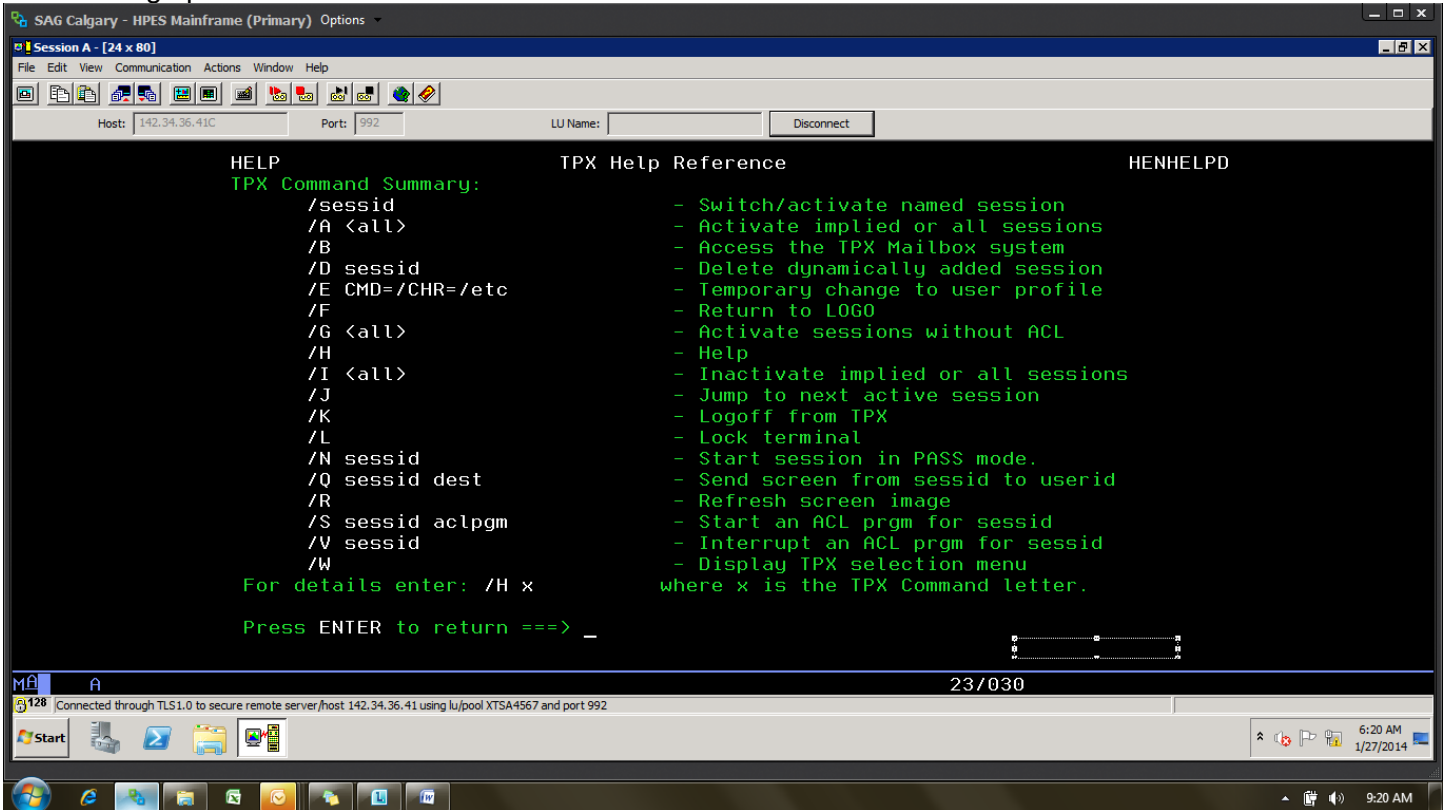


Example of ICBC TPX Menu



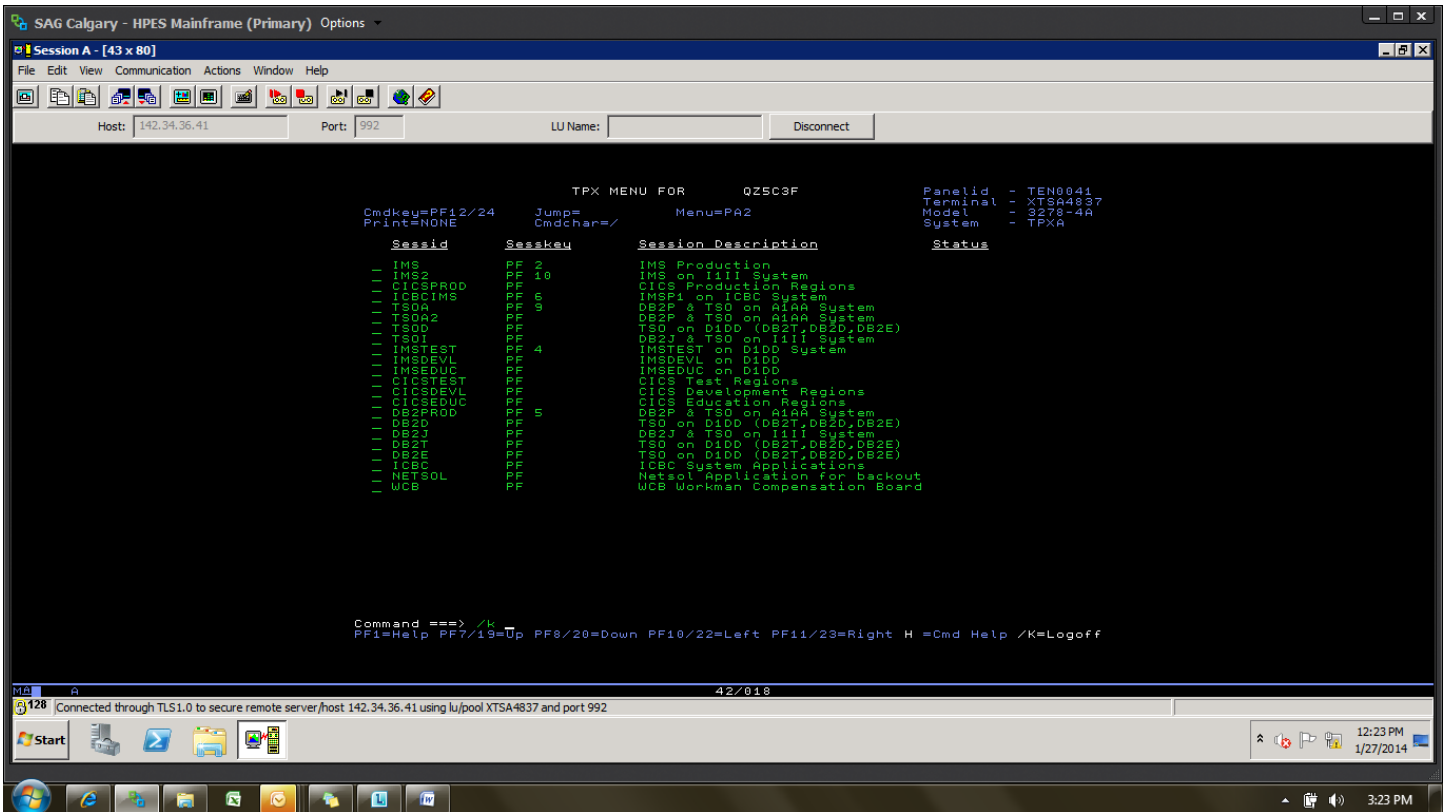
Help Menu

Once in TPX, to obtain additional Help information this can be done by entering H on the command line and the following options will be available.



Logoff

To logoff TPX you will need to enter the /k on the command line to logoff.



Change Management

CA TPX is part of the MVS RESBUILD. New versions are installed as they are released (GA version). Updates to the product are reported through regular change management procedures.

Support

Requests for assistance can be sent to the TSO Support mailbox - TSOHELP@gov.bc.ca

Documentation

CA TPX manuals are available at on MVS User Guide Site under the Vendor section:

https://ssbc-client.gov.bc.ca/mvs/userguide/Vendor_Docs/Vendor_Docs.htm

Technical Information Bulletins (TIBs)

Recent TIBs can be viewed online at [Technical Information Bulletins \(TIBS\)](#).

Tips and Hints Quick Reference

Logging on to TPX

From the NETSOL logon screen enter

- **/TPXA** for TPX on A1AA
- **/TPXI** for TPX on I1II
- **/TPXD** for TPX on D1DD
- Enter your RACF user id and Password to enter TPX session Manager

Logging off TPX

- At the command line enter **/k**

Command ==> **/k**

PF1=Help PF7/19=Up PF8/20=Down PF10/22=Left PF11/23=Right H =Cmd Help /K=Logoff

Select an Application

Selecting an Application to logon,. There are a few ways here are the 3 most common.

- If your application has a SessKey PF key assigned simply hit the PF key.

Sessid	Sesskey	Session Description	Status
_ IMS	PF 2	IMS Production	

- Enter the application name from the selection list on the command line

Command ==> **ims**

PF1=Help PF7/19=Up PF8/20=Down PF10/22=Left PF11/23=Right H =Cmd Help /K=Logoff

- Tab to the desired application and enter **S** to select the application.

Sessid	Sesskey	Session Description	Status
s IMS	PF 2	IMS Production	
_ IMS2	PF 10	IMS on I1II System	

How to Jump back to the TPX Menu

To jump back and forth between applications simply use either method.

- The **ESC** key has been defined as the MENU key. The Menu key switches a user to the TPX Menu, to return you back to the TPX Menu. In some cases your 3270 emulator ESC may not be supported in which case you may need to use PA2.
- Use the **PA2** button.